



Less False, Better Guard

Dahua Technology launches IP Solution with SMD Plus



False Alarm Filter



Quick Target Search



Affordable Solution



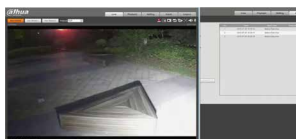
Easy Configuration

Dahua Technology launches IP Solution with SMD Plus

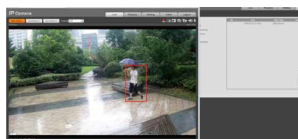
Highlights

• False Alarm Filtering, Human / Vehicle Classification

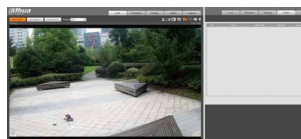
After capturing the target within monitoring range, the camera filters out leaves, lights, pets and other disturbing objects. Based on the deep learning algorithm, the camera classifies human / vehicles and pushes alarms in real time.



Filter useless information(the light)



Filter the extreme weather,
alarm push caused by human



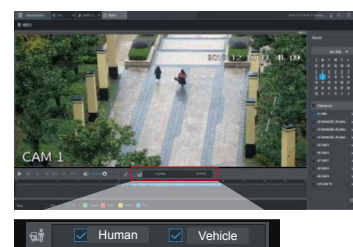
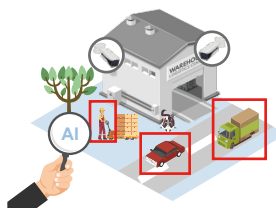
Filter useless information(the pet)



Alarm push caused by human and vehicle

• Quick Target Search

Extract and classify human and vehicles from massive video data, easy for end users to trace historical information and analyze. Optional Human / Vehicle playback to achieve quick target search, saving event retrieval time.



• High Cost - Effective

Smart functions, affordable price. Let the world share security by AI.



Factory

Alarm when human/
vehicles enter dangerous area



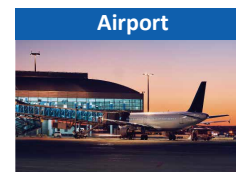
Museum

Alarm when human approach cultural relic



Villa

Alarm when strangers enter



Airport

Alarm when human /
vehicles enter dangerous area

Application Scenarios



Factory

- Early warning
- Reduce the number of patrols
- Avoid entering to dangerous area



Villa

- Avoid strangers entering
- Real - time monitoring and alarm push

* Design and specifications are subject to change without notice.

Ver. 2, Sep. 2019

DAHUA TECHNOLOGY

No.1199 Bin'an Road, Binjiang District, Hangzhou, China. 310053

Tel: +86-571-87688883 Fax: +86-571-87688815

Email: overseas@dahuatech.com

www.dahuasecurity.com

